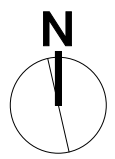


Site Plan with Access from Shakespeare Street
Scale: 1" = 20'



CLIENT: Courtney Klein & Ezra Hercenberg
PROJECT: 825 S. Bond St. Baltimore, MD 21231
DATE: 06.18.2013

CHAP Submission
Fells Point Historic District

trace ARCHITECTS **C-1**

338 E. 25TH ST, SUITE 100
 BALTIMORE, MD 21218
 (P) 443 838 0379
 www.tracearchitects.com jim@tracearchitects.com